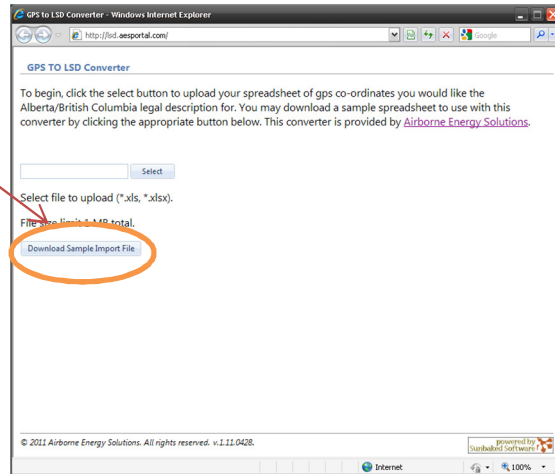


## Batch GPS to LSD Converter

### Step 1. Download Import File Template

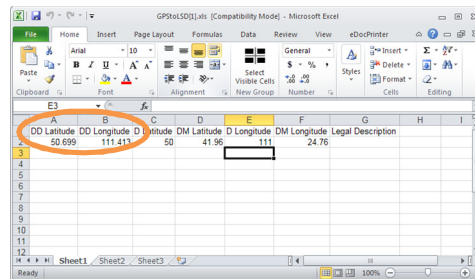
Click on *Download Sample Import File* Button and Open or Save Excel spreadsheet for entering the GPS Co-Ordinates that you want to convert to LSD format.



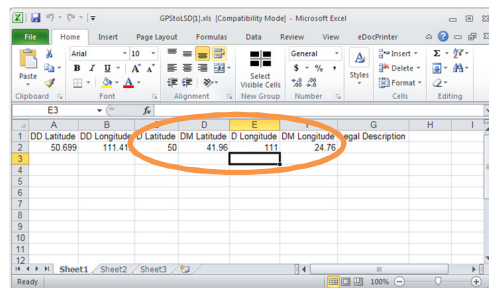
### Step 2. Open Template and input GPS Co-ordinates

The Template accepts either Decimal Degrees or Degrees Decimal Minutes Co-ordinates.

To Enter Decimal Degrees enter your co-ordinates in the DD Latitude and DD Longitude Columns as appropriate. Save the Template.

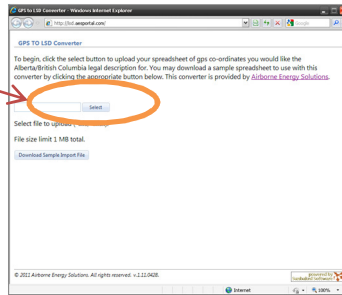


To Enter Degrees Decimal Minutes enter your co-ordinates in the D Latitude and DM Latitude then D Longitude and DM Longitude columns as appropriate. Save the Template.

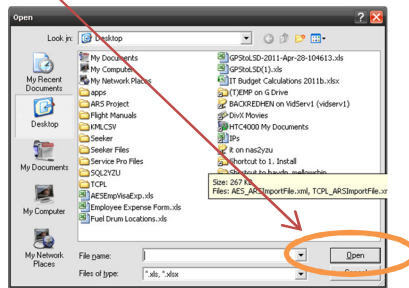


### Step 3. Upload Complete Template for Conversion

Click *Select* Button

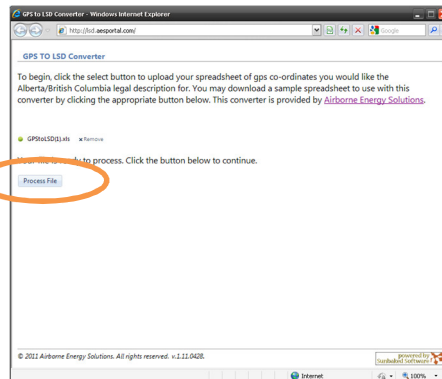


Select the Completed Template and **Open**



### Step 4. Process Template File for Conversion

Click *Process File*



Click *Save*, and save to the location you want the file. **NB.** The Filename has changed for you.

